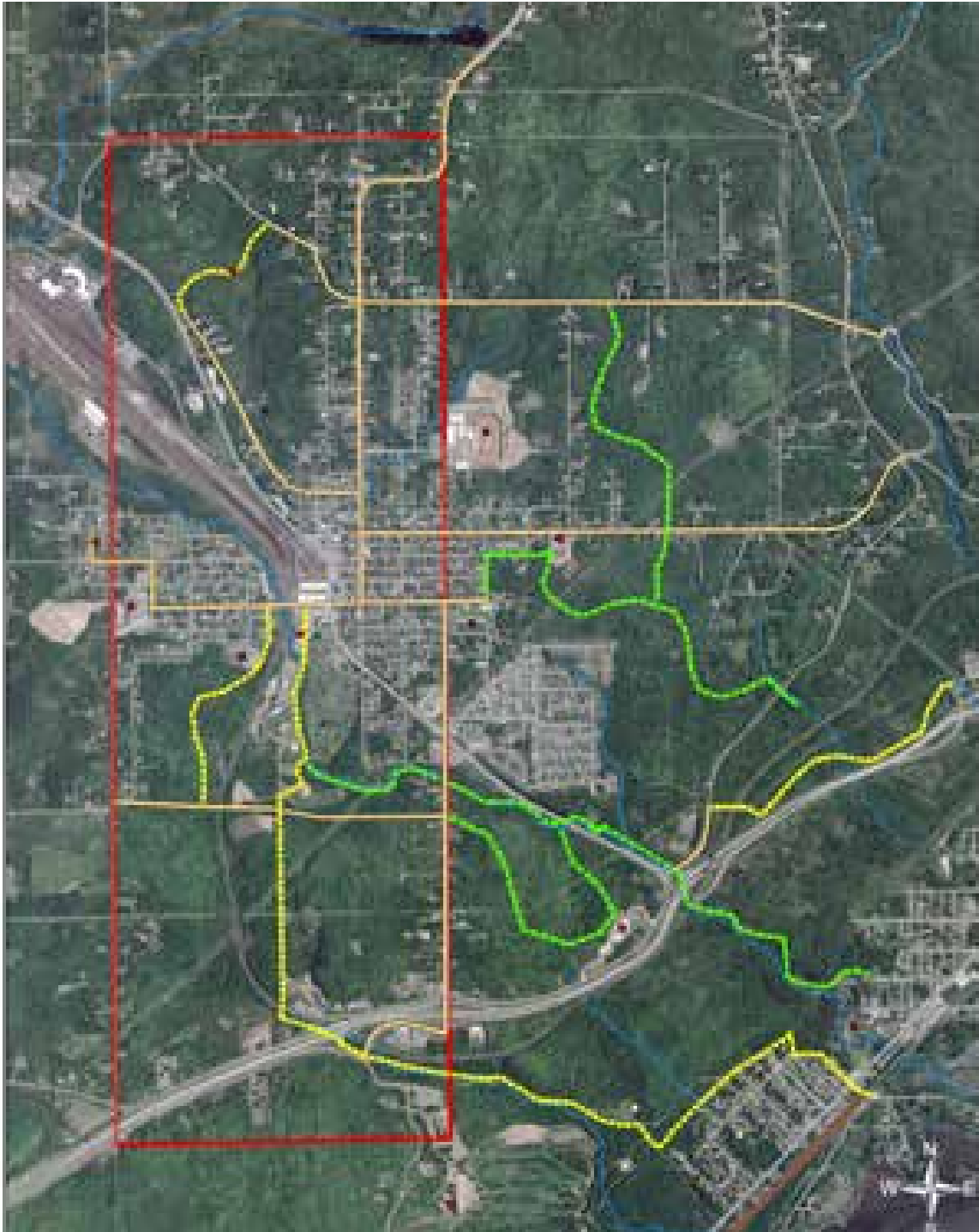




Proctor Master Trail Plan

*Proctor Comp Plan Group
August 21, 2007*



Proctor Trail Network



Unpaved Trail (hiking)



Paved Trail (10')
(hiking, biking)



Roadway/sidewalk



Proctor City Boundary



Point of Interest

Trail Segments

- **Proctor Spur** – paved, 10-foot wide
 - Regional Rec Center
 - I-35 Crossing
 - Knowlton Creek
 - Norton Park
- **Unpaved Trails** – nature trails
 - Kingsbury Creek Trail
 - BayView Trail
 - Thompson Hill Trail
 - St. Louis River Rd to Vinland St Trail
- **Paved Trails** – paved, 10-foot wide
 - Old Hwy 61 Trail
 - Western Proctor Trail
 - North Proctor Park Trail
- **Roadway/Sidewalk Trails** – wider sidewalks, bike lanes, pedestrian friendly streetscape
 - Central Walkway (2nd Street)
 - Boundary Ave
 - Lavaque Rd
 - St. Louis River Rd
 - Vinland St
 - Kirkus St

Proctor Spur

- ❖ Paved Trail
- ❖ Linking Community Center, Spirit Mtn & Munger Trail
- ❖ Length – 3.5 miles
- ❖ Cost - \$3 million (2007 dollars)
- ❖ Issues:
 - Steep grades
 - Crossing I-35
 - Adjacent to snowmobile trail in some areas



Proctor Spur Regional Rec Center Segment

- ❖ Community Center to I-35
- ❖ Length – 1.2 miles
- ❖ Goes by Rec Center amenities
- ❖ Issues: not all land is public



Regional Rec
Center Segment

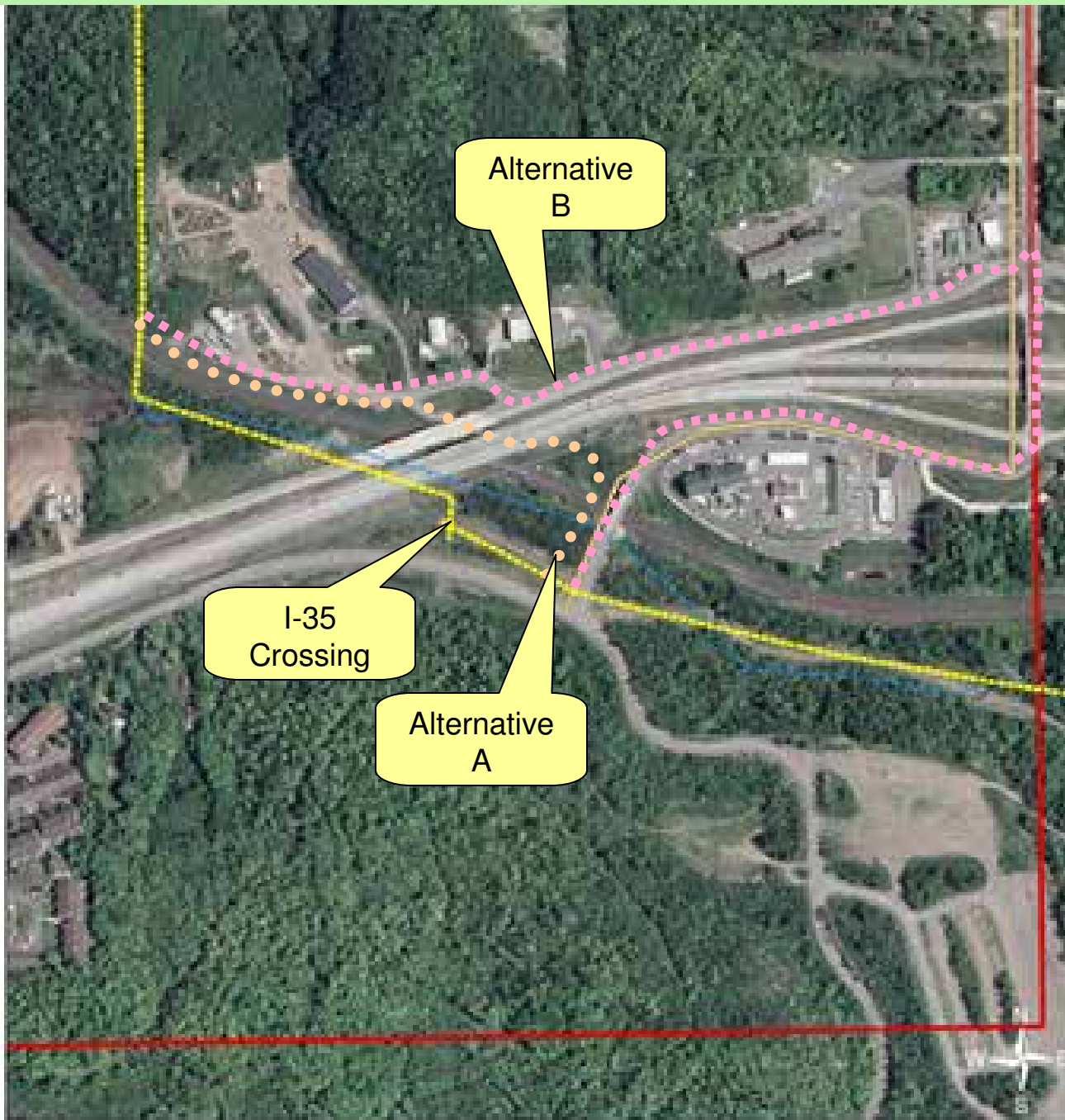




Trail Amenities

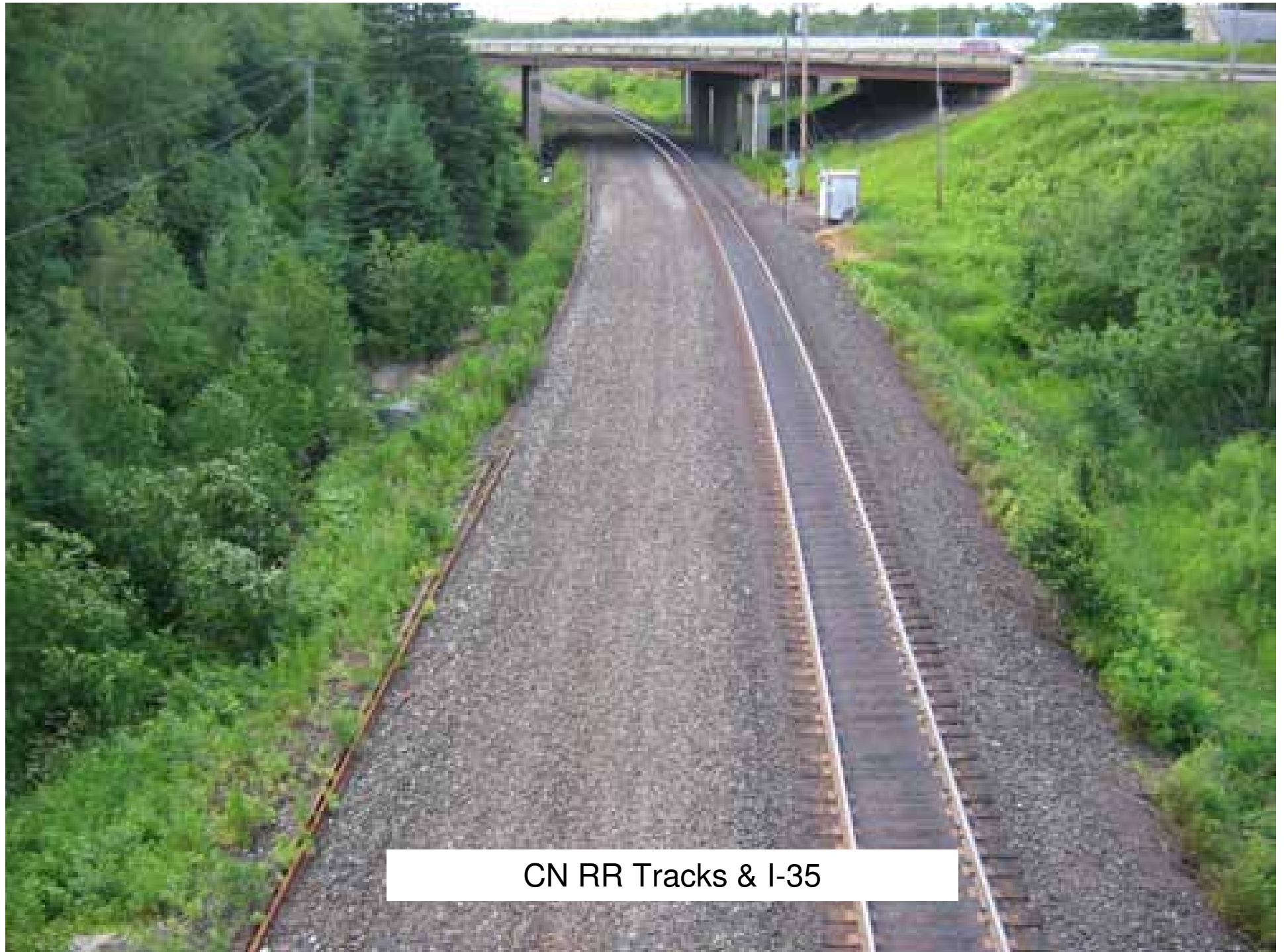


Trail Alignments



Proctor Spur I-35 Crossing Segment

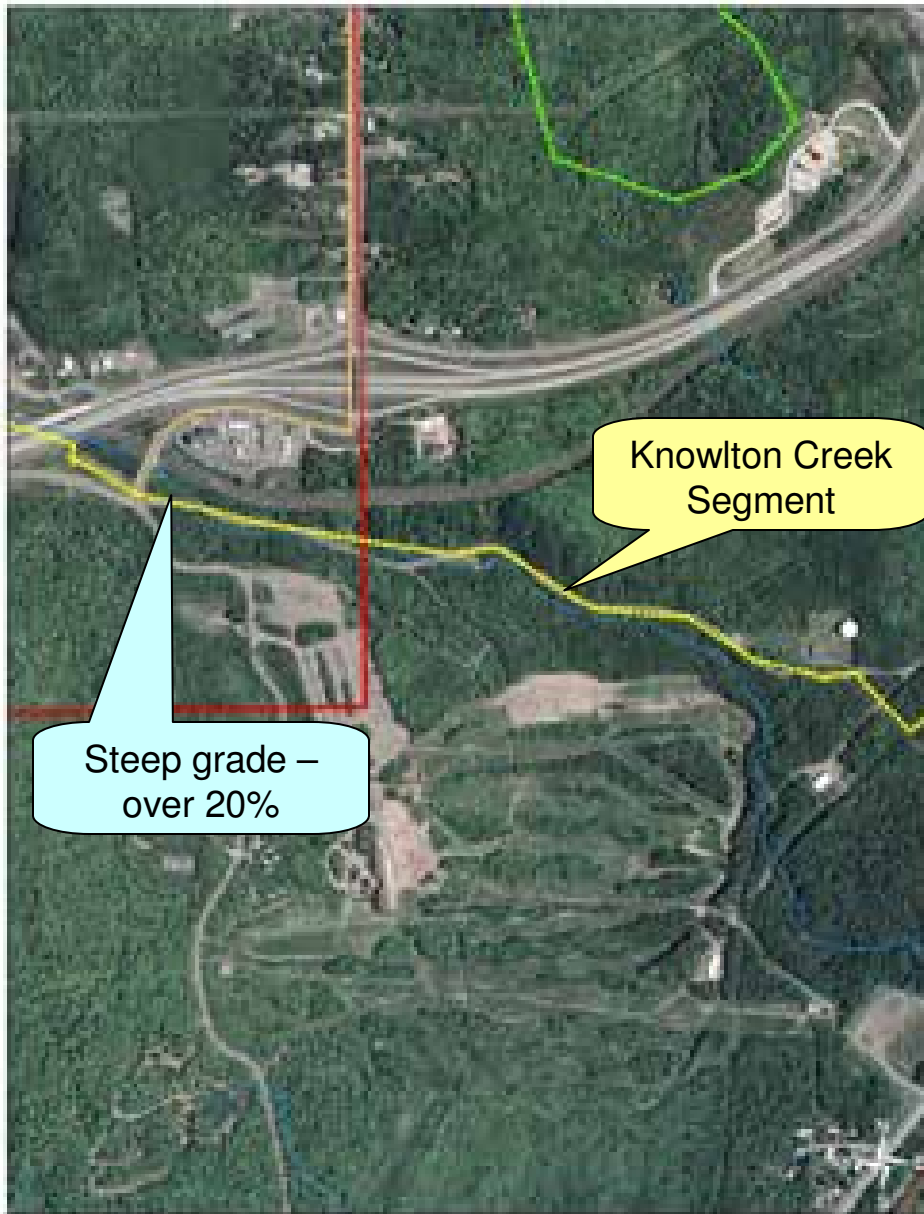
- ❖ CN RR Tracks to Skyline Pkwy
- ❖ Length – 0.25 miles
- ❖ Connects to Spirit Mtn
- ❖ 2 Alternative Routes
 - Alternative A
 - Alternative B
- ❖ Issues:
 - RR crossings are difficult & expensive
 - Possible need of bridge to cross RR tracks



CN RR Tracks & I-35

Proctor Spur Knowlton Creek Segment

- ❖ Skyline Pkwy to Norton Park
- ❖ Length – 1.03 miles
- ❖ Scenic Area follows Knowlton Creek
- ❖ Follows the Cloquet Waterline Easement
- ❖ Issues:
 - Steep grade - over 20% for segment going down from Skyline Pkwy to first Knowlton Creek crossing
 - New bridges needed in spots
 - Share alignment with snowmobile trail in spots





Scenic View - looking down from
Skyline Pkwy

Steep Grade – looking up from
Knowlton Creek





Existing Trail – typical condition

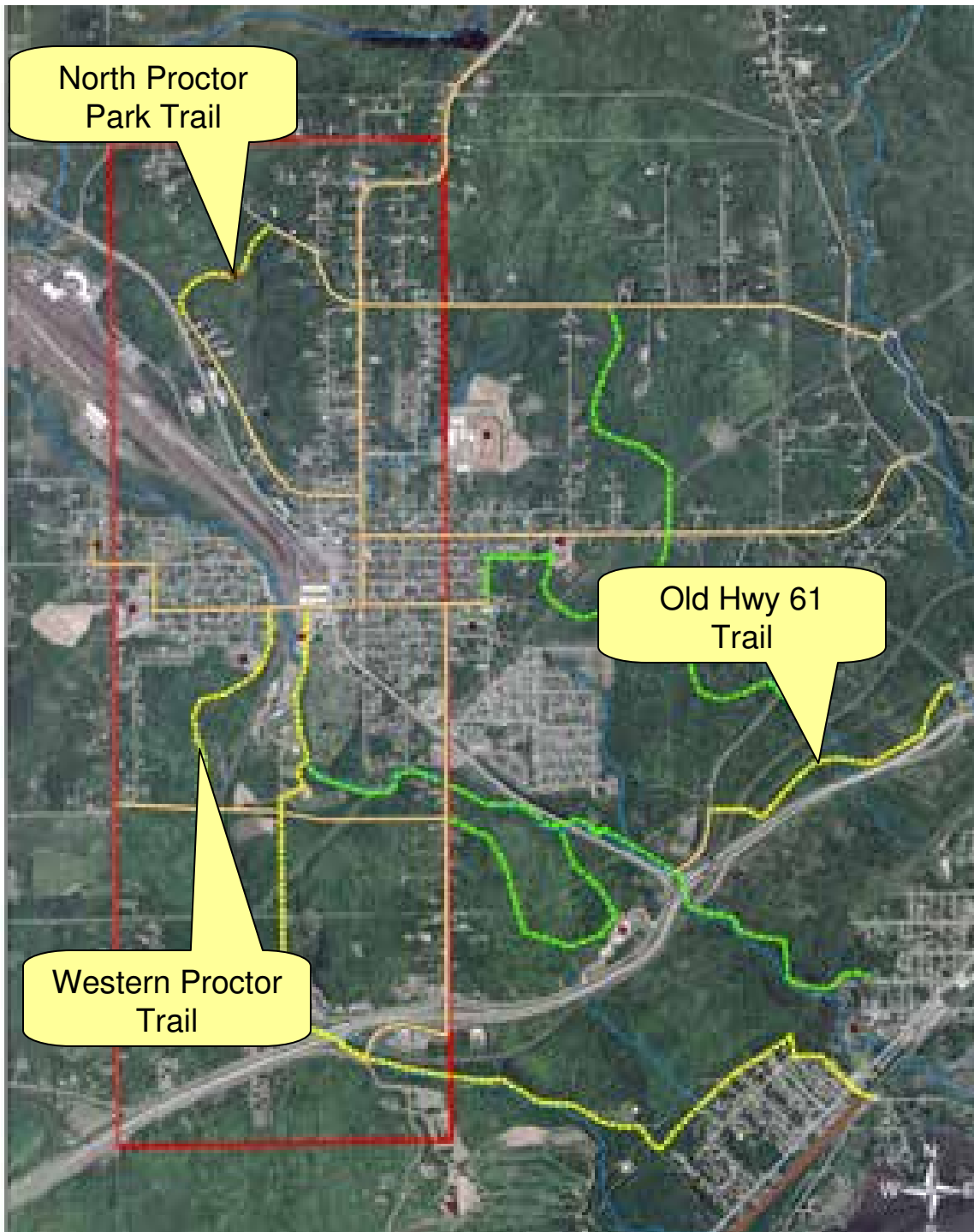
Knowlton Creek – new bridge need
to cross creek



Proctor Spur **Norton Park Segment**

- ❖ Old RR bed to Munger Trail
- ❖ Length – 0.9 miles
- ❖ Connects to existing Munger Trail trailhead and parking lot
- ❖ Close to Lake Superior Zoo & Kingsbury Creek Trail
- ❖ Follows an old railroad bed
- ❖ Issues:
 - Crossing Grand Ave
 - Running along 75 Ave West





Paved Trails – paved, 10-foot wide

▪ **Old Hwy 61 Trail**

- 65th Ave West to Skyline Pkwy
- Follows old road
- Where road deadends, follow utility easement, and cross RR tracks

▪ **Western Proctor Trail**

- Connects 2nd Street with Kirkus Street
- Goes by St. Rose and areas for new residential development

▪ **North Proctor Park Trail**

- Connects St. Louis River Road and Old Hwy 2 through 40-acre parkland

Old Hwy 61



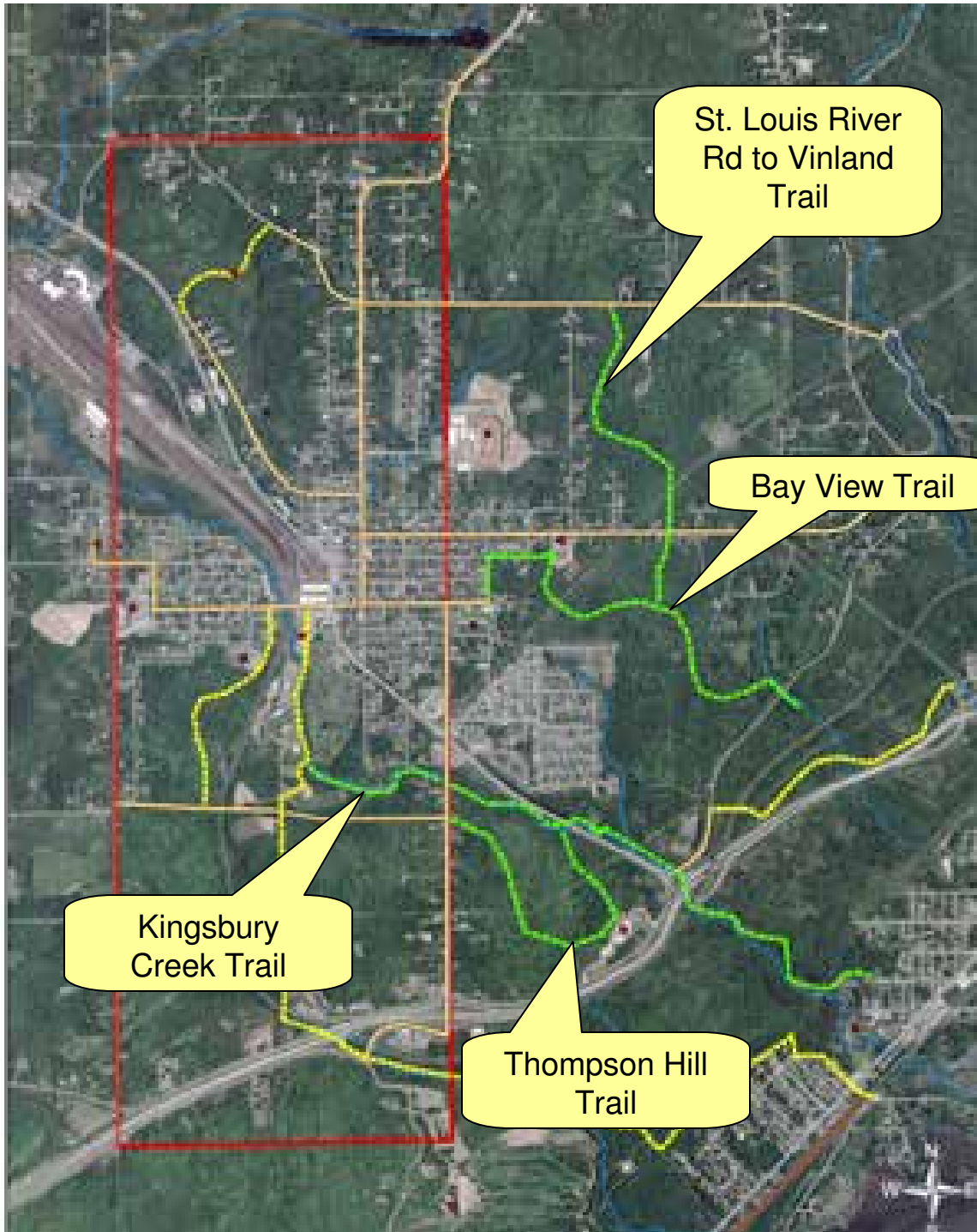
Old Hwy 61 – good condition of old roadway

Old Hwy 61 – vegetation starting to takeover old roadway





Utility easement connection from the end of Old Hwy 61 and Skyline Pkwy



Unpaved Trails – nature trails

- Kingsbury Creek Trail
- Bay View Trail
- Thompson Hill Trail
- St. Louis River Rd to Vinland Trail

Kingsbury Creek Trail



Existing trail running under old RR bridge



Existing trail entrance near Zoo

Kingsbury Creek Trail



Scenic Kingsbury Creek running
thru I-35 culvert

❖ Scenic trail connection along Kingsbury Creek

❖ I-35 and U.S. Hwy 2 creates an existing barrier to create a trail along Kingsbury Creek from Proctor to Lake Superior Zoo



Bay View Connector

Existing trail built by Bay View Elementary students (school in background)



Bay View Elementary

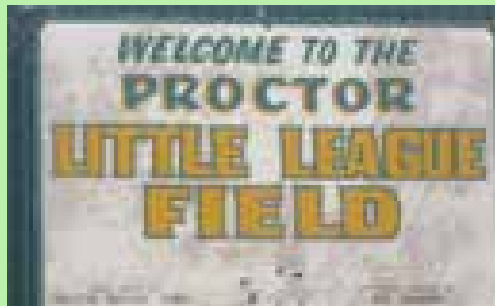
Bay View Connector



Midway Ave – Bay View to Klang Park connection

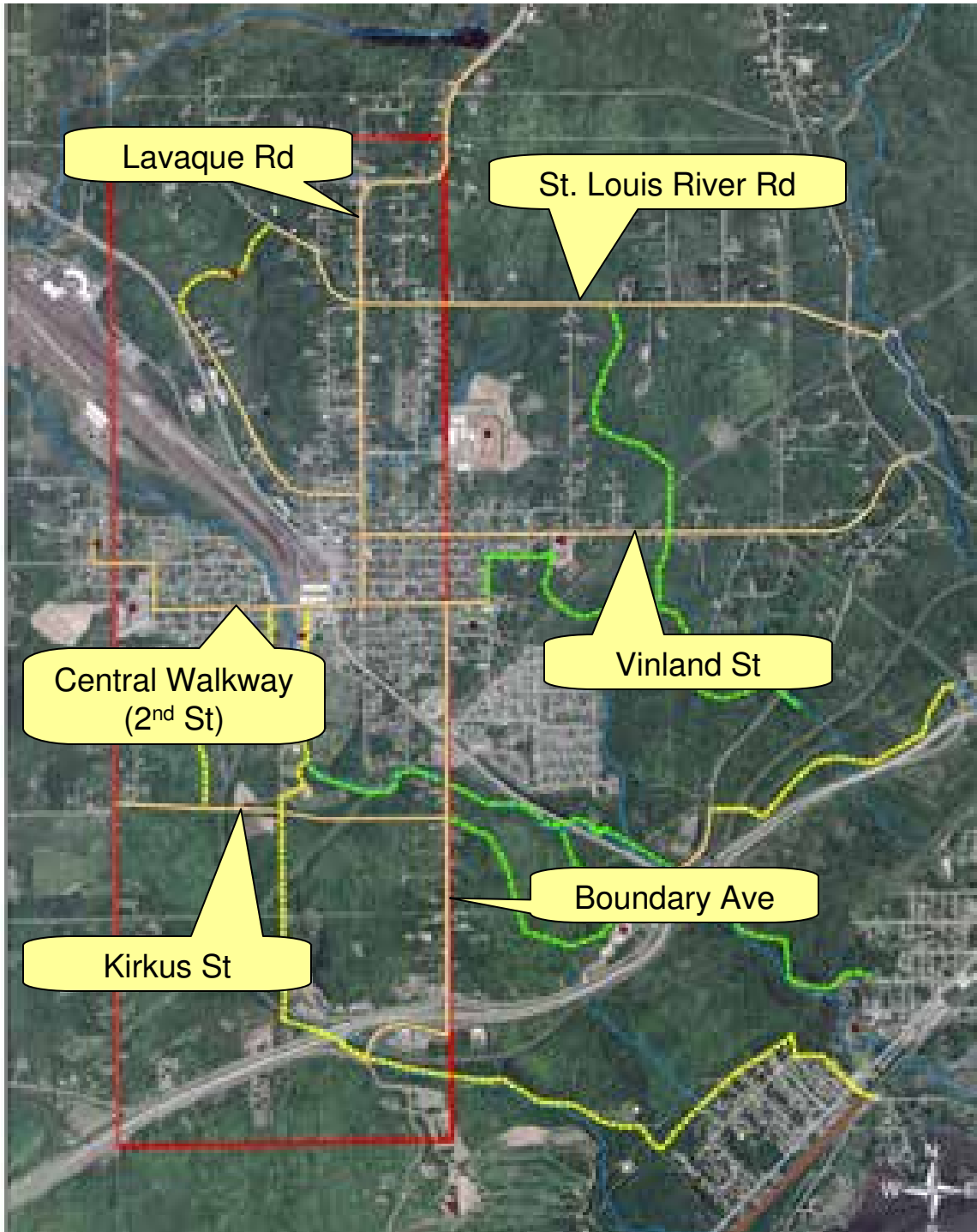


Klang Park



North Park Trail





Roadway/Sidewalk

Trails wider sidewalks, bike lanes, pedestrian friendly streetscape

- Central Walkway (2nd Street)
- Boundary Ave
- Lavaque Rd
- St. Louis River Rd
- Vinland St
- Kirkus St

Central Walkway (2nd Street)



Central Walkway (2nd Street)

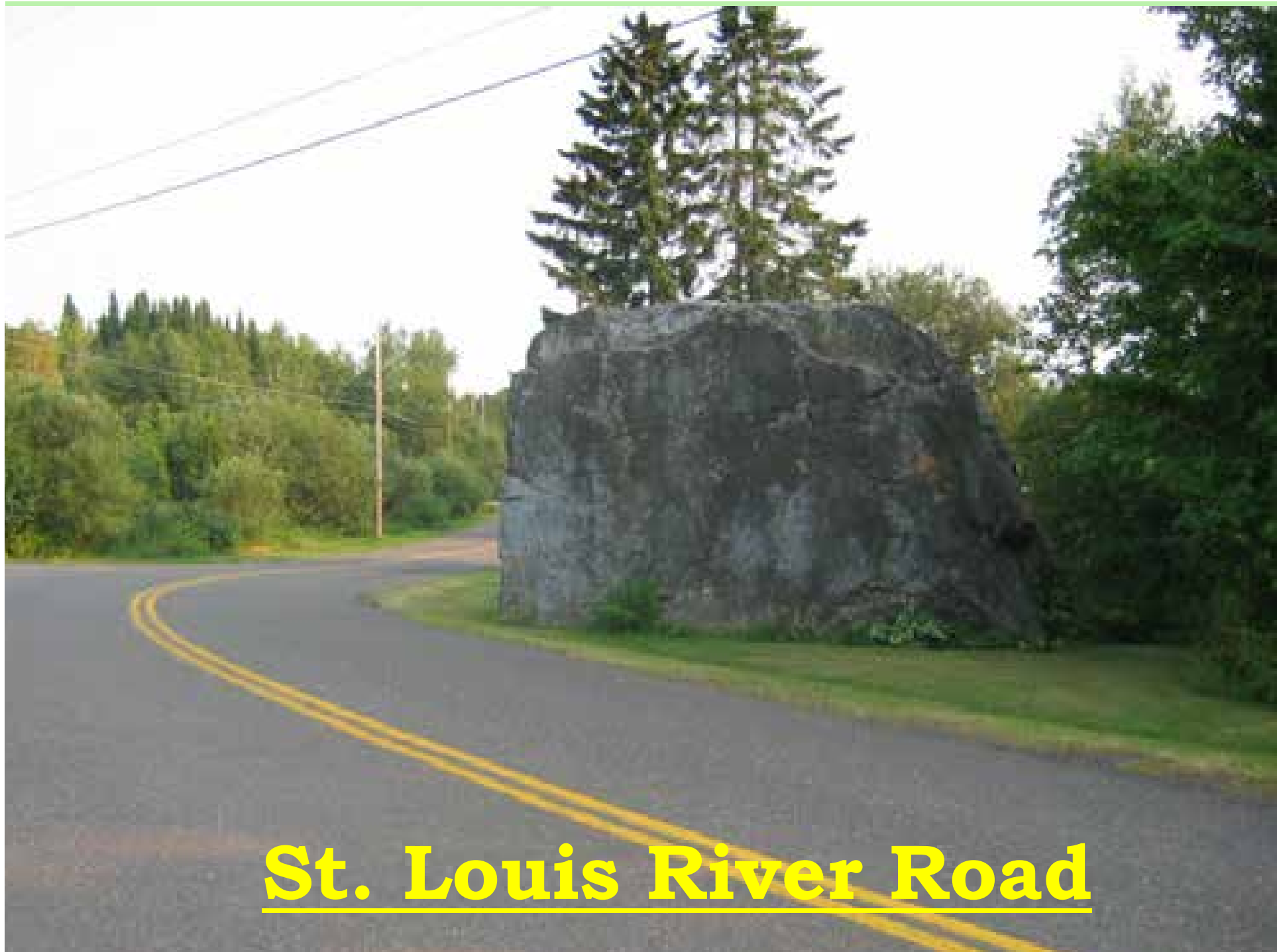


Boundary Avenue





Mogie Lake – view from Lavaque Road



St. Louis River Road



Vinland Street

Plan Components

- **Segment** – Proposed Alignment (alternatives in some cases)
- **Type** – paved trail, sidewalk, unpaved trail (Superior Hiking Trail, wider path)
- **Photos** of segments
- **Issues** with segment
- **General cost** estimates

Trails Signage & Naming

- Unified signage for trail network
 - Comp Plan process
 - Design (work with schools)
- Name each trail segment
 - Ex. “Proctor Spur” – Munger Trail connection

Trail Funding

- Federal Transportation Enhancement
- Safe Routes to School
- Federal Recreation & Trail
- Minnesota DNR
 - Trails & Waterways
 - Outdoor Rec & Trail Link
- Health Initiatives funding

Proctor Master Trail Plan Schedule

- **Comp Plan Group (Tues, Aug. 21)**
- **Planning & Zoning (Mon, Aug. 27)**
- **Proctor City Council (Tues, Sept. 4)**
- **MIC Final Approval (Wed, Sept 19)**